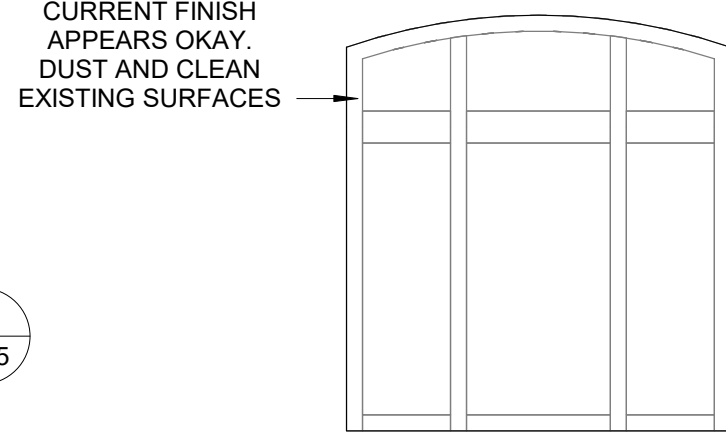
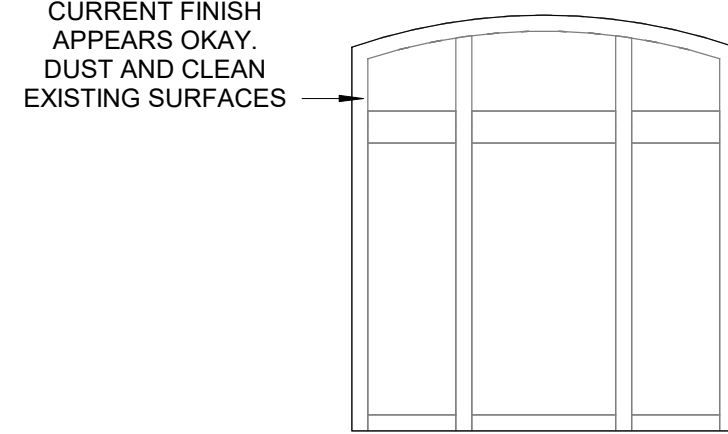


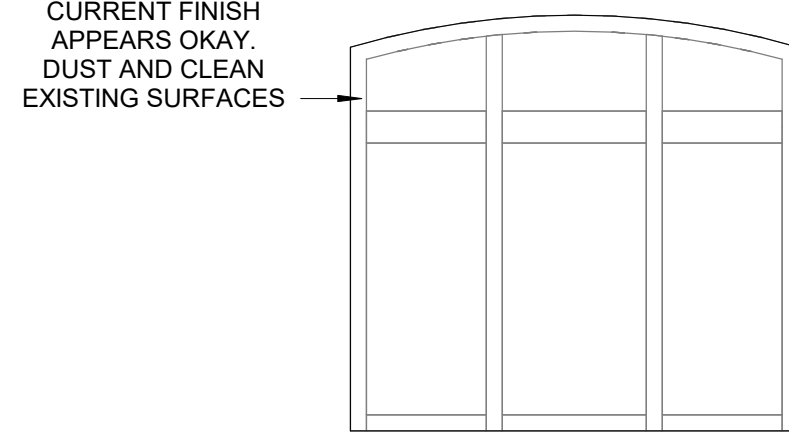
① Window - A Interior
1/4" = 1'-0"



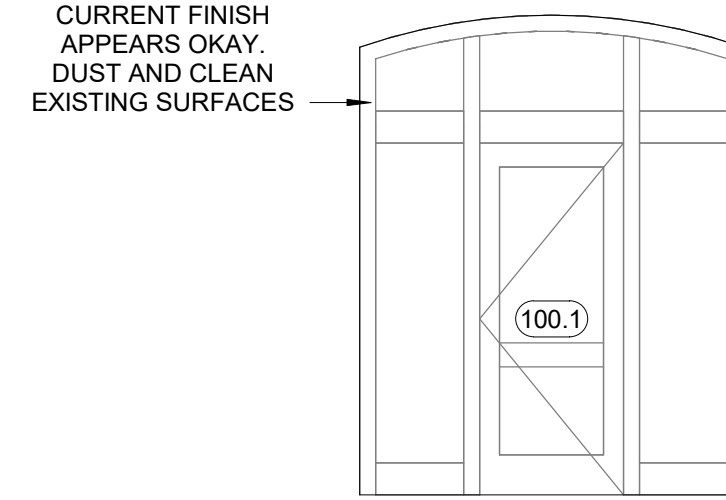
② Window - B Interior
1/4" = 1'-0"



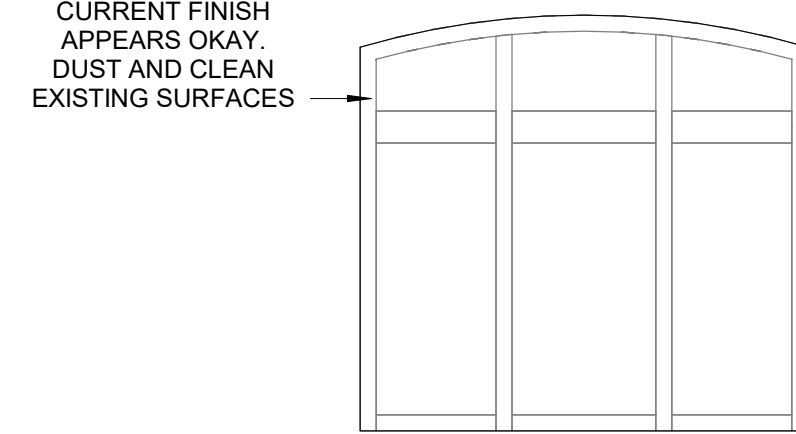
③ Window - C Interior
1/4" = 1'-0"



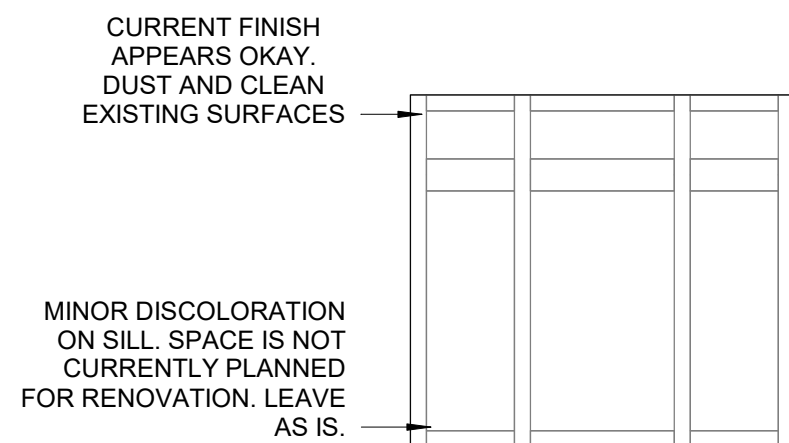
④ Window - D Interior
1/4" = 1'-0"



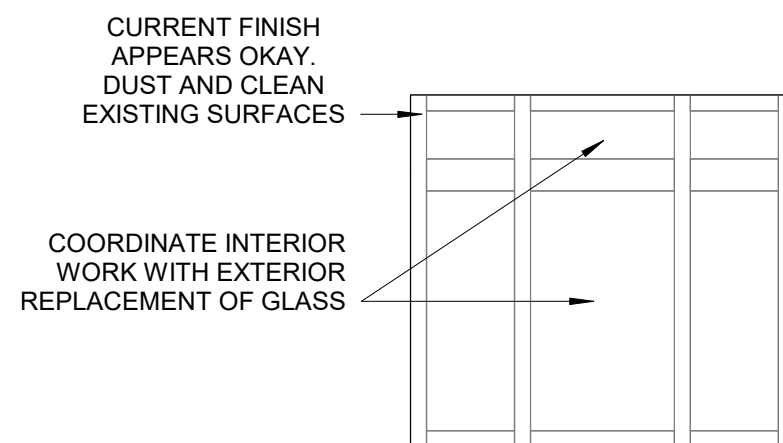
⑤ Window - E Interior
1/4" = 1'-0"



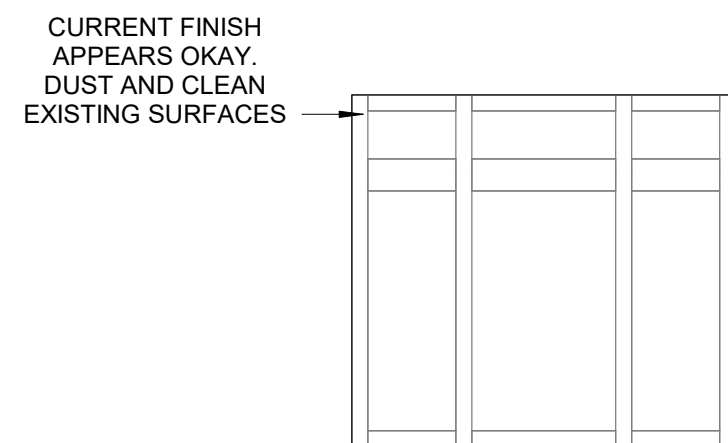
⑥ Window - F Interior
1/4" = 1'-0"



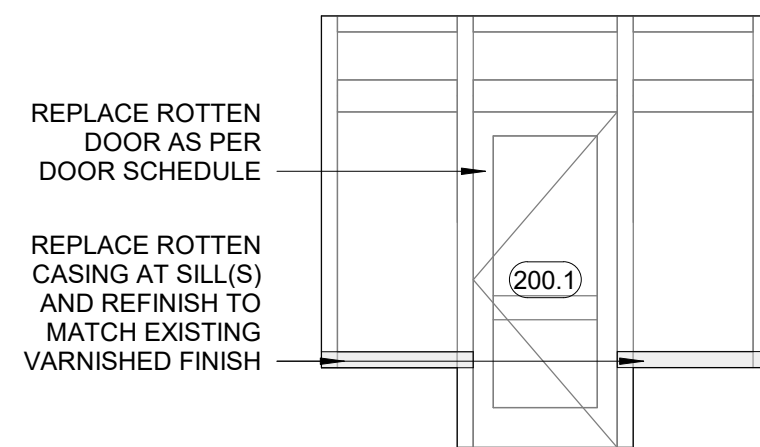
⑦ Window - G Interior
1/4" = 1'-0"



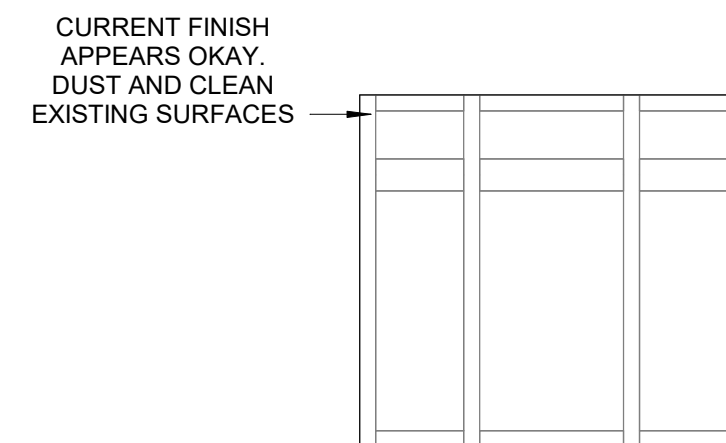
⑧ Window - H Interior
1/4" = 1'-0"



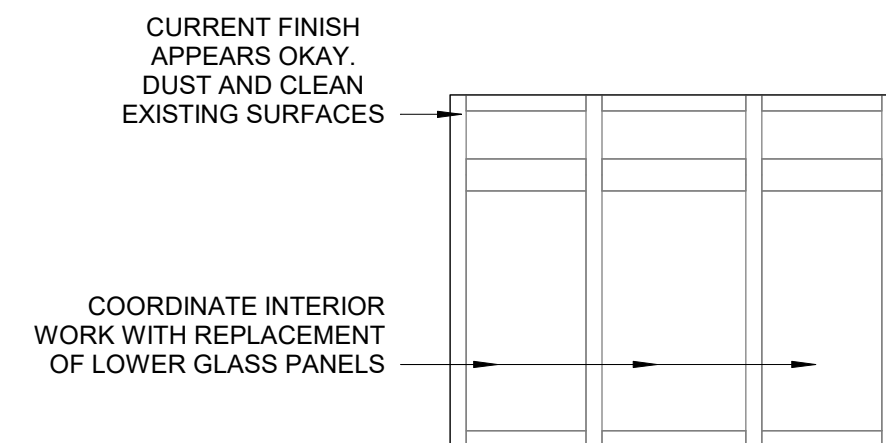
⑨ Window - I Interior
1/4" = 1'-0"



⑩ Window - J Interior
1/4" = 1'-0"

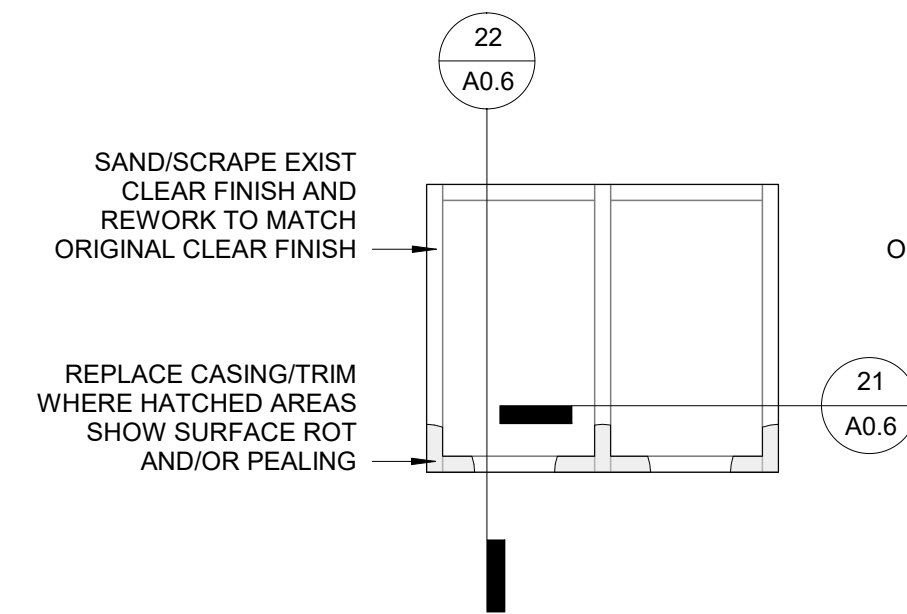


⑪ Window - K Interior
1/4" = 1'-0"

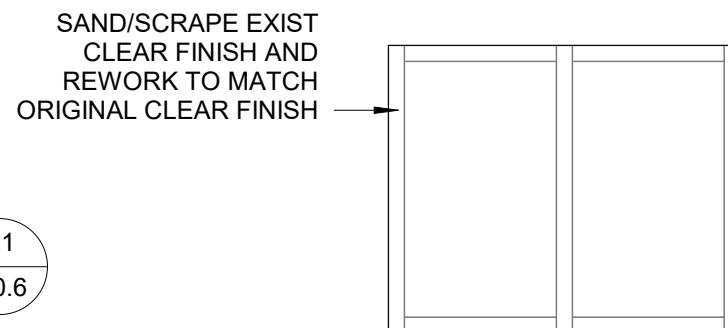


⑫ Window - L Interior
1/4" = 1'-0"

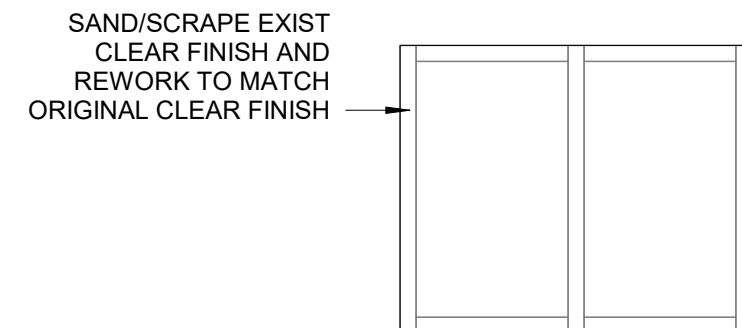
NOTE: WITH THE EXTENSIVE AMOUNT OF EXTERIOR DAMAGE TO EXISTING WOOD SILLS AND CASING, BE SURE TO COORDINATE PRESERVATION OF THE INTERIOR CASINGS/TRIM.



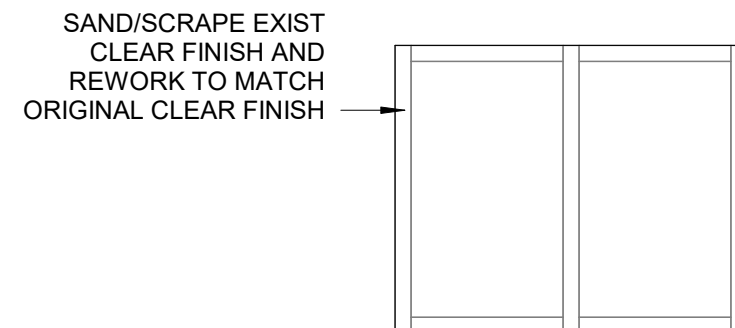
⑬ Window - M Interior
1/4" = 1'-0"



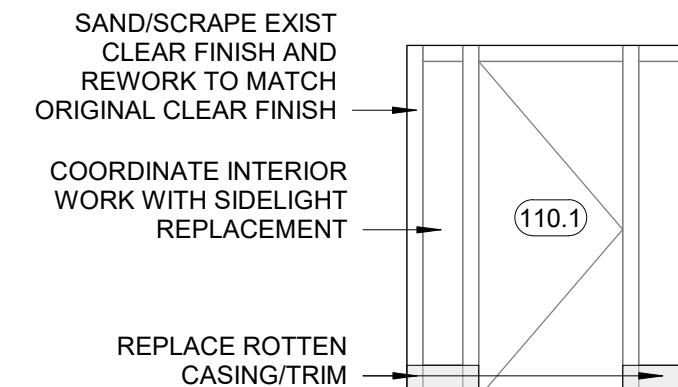
⑭ Window - N Interior
1/4" = 1'-0"



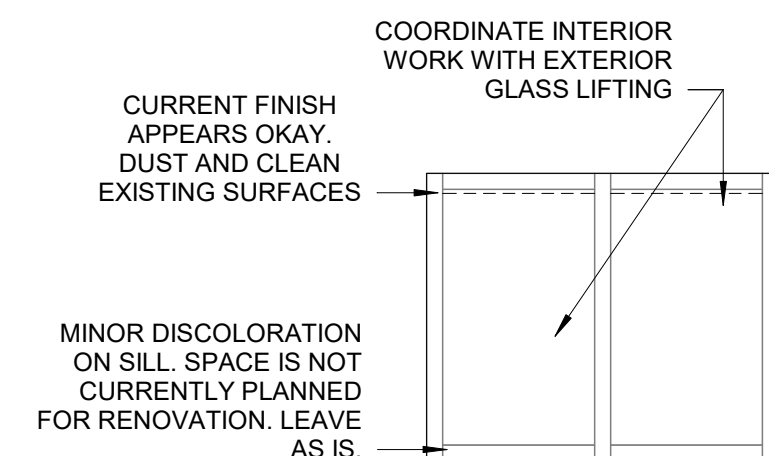
⑮ Window - O Interior
1/4" = 1'-0"



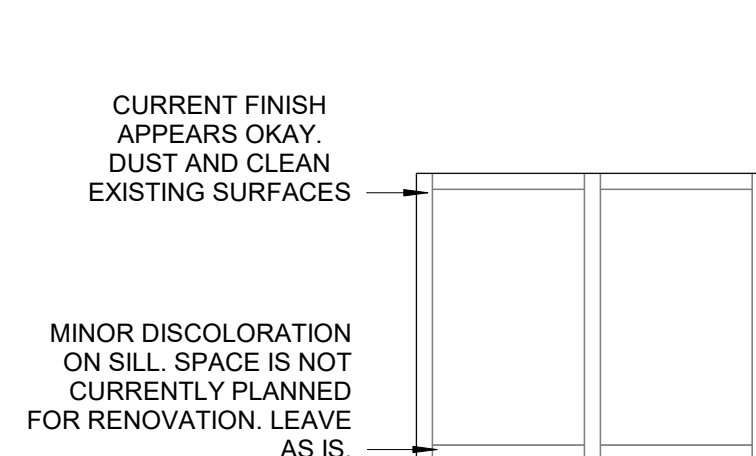
⑯ Window - P Interior
1/4" = 1'-0"



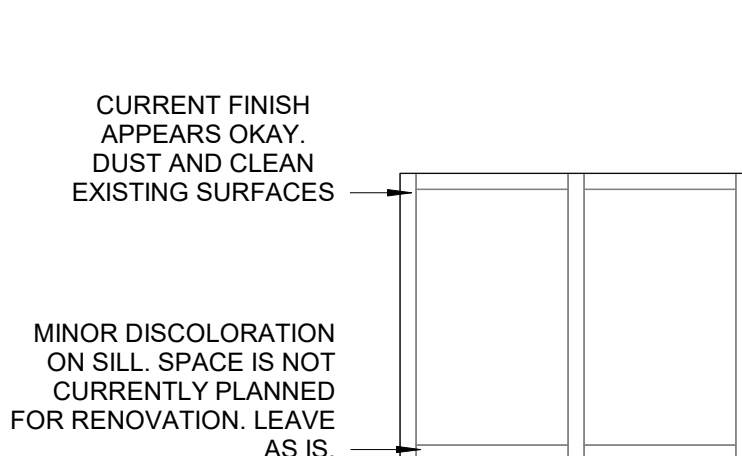
⑰ Window - Q Interior
1/4" = 1'-0"



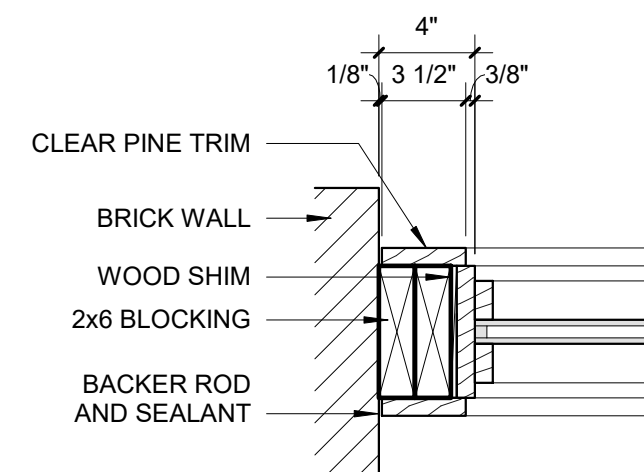
⑱ Window - R Interior
1/4" = 1'-0"



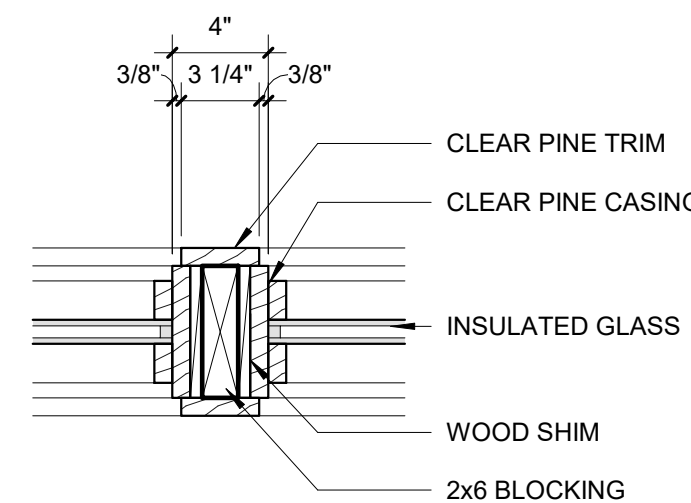
⑲ Window - S Interior
1/4" = 1'-0"



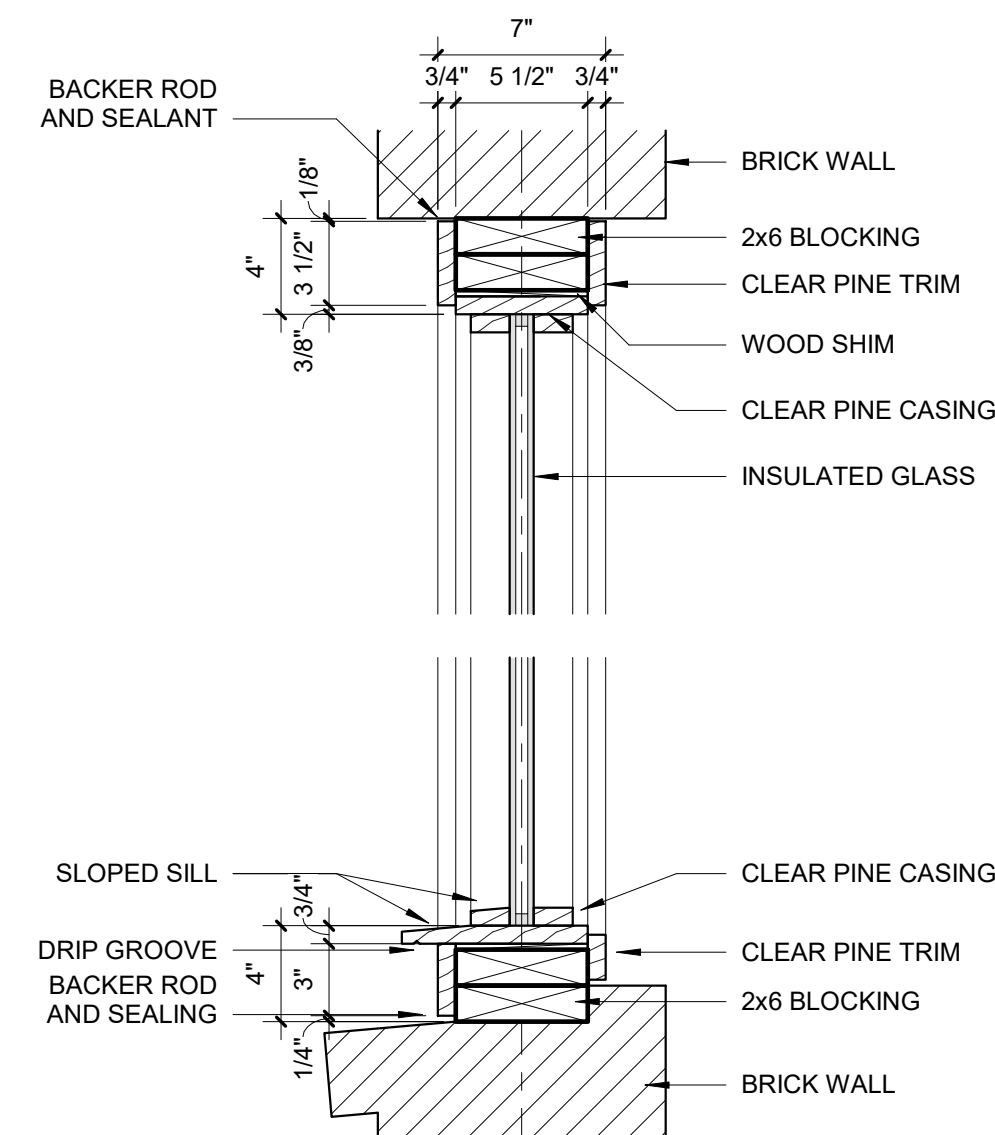
⑳ Window - T Interior
1/4" = 1'-0"



㉑ Rear Window Jamb
1 1/2" = 1'-0"



NOTE: DETAILED SECTIONS REPLICATED FROM ORIGINAL CONSTRUCTION DOCUMENTS



㉒ Rear Window Detail
1 1/2" = 1'-0"

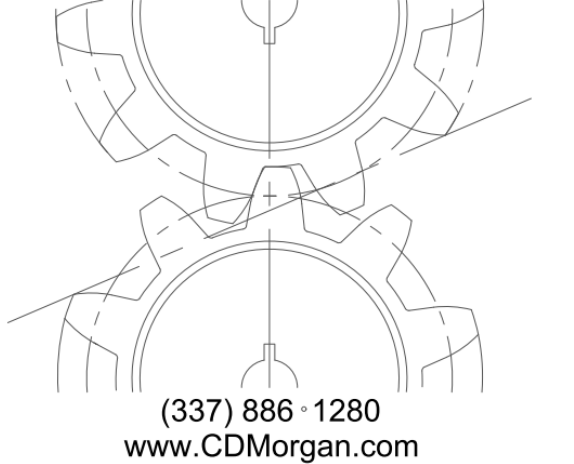


Job Title: _____
**Office of the State
Public Defender
District 8 Office
Building**

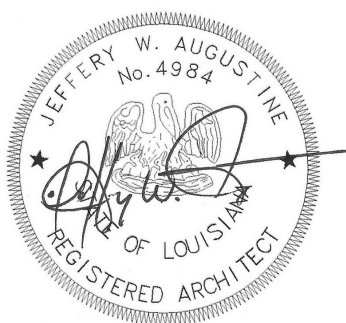
111 West Main Street
Winnfield, LA 71483

CDMorgan

& ASSOCIATES, INC.
ENGINEERING CONSULTANTS
A PROFESSIONAL ENGINEERING AND ARCHITECTURAL
CORPORATION
CARENCRO LOUISIANA



(337) 886-1280
www.CDMorgan.com



Seal: _____

May 15, 2026
Construction Documents

No.	Description	Date

KEY PLAN

Openings

Project No.: BLO001-25 Drawn By: JWA

A0.6

OSPD

Sheet No.: _____

5/15/2026 12:03:22 PM